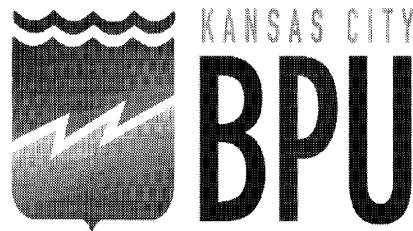


BOARD INFORMATION PACKET



**Board of Public Utilities
Kansas City, Kansas**

Regular Meeting of

April 21, 2021



**Gold Award
for
Competitiveness
Achievement**



Table of Contents

April 21, 2021

Agenda Item #III.....Approval of Agenda

Agenda Item #IV.....Approval of the Minutes of the Work Session of April 7, 2021

Agenda Item #V.....Approval of the Minutes of the Regular Session of April 7, 2021

Agenda Item #VI.....General Manager / Staff Reports

Agenda Item #IX.....Executive Session

Approval of Agenda

Agenda Item #III



Board of Public Utilities
Kansas City, Kansas

BOARD AGENDA

Regular Session
April 21, 2021 – 6:00 P.M.

- I. Call to Order
- II. Roll Call
 - ___ Ryan Eidson, At Large, Position 2
 - ___ Tom Groneman, District 2
 - ___ Robert L. Milan, Sr., District 1
 - ___ Jeff Bryant, District 3
 - ___ Mary L. Gonzales, At Large, Position 1
 - ___ Rose Mulvany Henry, At Large, Position 3
- III. Approval of Agenda
- IV. Approval of the Minutes of the Work Session of April 7, 2021
- V. Approval of the Minutes of the Regular Session of April 7, 2021
- VI. Public Comments
- VII. General Manager / Staff Reports
 - i. COVID-19 Update
 - ii. Leavenworth Road Association Update
 - iii. Turner Community Connection Update
 - iv. Miscellaneous Comments
- VIII. Board Comments
- IX. Executive Session
- X. Adjourn

Approval of Minutes
Work Session 4-7-21
Agenda Item #IV

WORK SESSION MINUTES – WEDNESDAY, APRIL 7, 2021

STATE OF KANSAS)
) SS
CITY OF KANSAS CITY)

The Board of Public Utilities of Kansas City, Kansas (aka BPU, We, Us, Our) met remotely in Work Session on Wednesday, April 7, 2021 at 5:00 P.M. The following Board Members were on the teleconference: Robert L. Milan, President; Mary Gonzales, Vice President; Rose Mulvany Henry, Secretary; Jeff Bryant, Thomas Groneman, and Ryan Eidson.

Also on teleconference: William Johnson, General Manager; Angela Lawson, Deputy Chief Counsel; Lori Austin, Chief Financial Officer/Chief Administrative Officer; Jeremy Ash, Executive Director Electric Operations; Steve Green, Executive Director Water Operations; Johnetta Hinson, Executive Director Customer Service; Dong Quach, Executive Director Electric Production; Jerry Sullivan, Chief Information Officer; Jerry Ohmes, Executive Director Electric Supply; Robert Kamp, IT Project Manager; Dennis Dumovich, Director Human Resources; Patrice Townsend, Director Utility Services; Andrew Ferris, Director Electric Supply Planning; Ingrid Setzler, Director Environmental Services; and Scott Paulsen, Supervisor Vegetation Management.

A tape of this meeting is on file at the Board of Public Utilities.

Mr. Milan called the meeting to order at 5:00 P.M.

Roll call was taken, and all Board Members were present.

Item #3 – Approval of Agenda

A motion was made to approve the Agenda by Ms. Gonzales, seconded by Mr. Bryant and unanimously carried.

Item #4 – Board Updates / GM Updates

There were no comments.

Item #5 –Vegetation Management Update

Mr. Jeremy Ash, Executive Director Electric Operations and Mr. Scott Paulsen, Supervisor Vegetation Management, gave a PowerPoint presentation to update the Board on the utility vegetation management and maintenance. (see attached).

WORK SESSION MINUTES – WEDNESDAY, APRIL 7, 2021

STATE OF KANSAS)
) SS
CITY OF KANSAS CITY)

Mr. Johnson commented on system reliability and its connection with vegetation management. It was now a requirement to track and report our numbers to the federal government. Making sure that system reliability wasn't an issue, directly affected economic development. He commended them on doing an excellent job in getting our numbers where they needed to be.

Item #6 – Nearman Bottom Ash Project

Ingrid Setzler, Director Environmental Services, gave an update to the Board on the Nearman Creek Power Station Surface Impoundment Closure, including key regulatory considerations that went into the closure, with a PowerPoint presentation (see attached).

Ms. Setzler addressed questions and comments from Mr. Johnson and the Board.

Item #7 – Adjourn

A motion was made to adjourn the Work Session at 5:49 P.M. by Mr. Eidson, seconded by Ms. Gonzales and carried unanimously.

ATTEST:

APPROVED:

Secretary

President



Kansas City Board of Public Utilities

Vegetation Management



65,000 Electrical Customers

- Estimated 6.6 million trees with an average of over 100 trees per customer. US average/12.
- Current 3 year cycle with over 115 Feeders. Nationally only 5% of electric utilities are on a 3 year cycle!
- \$2.67 million annual Budget. Decreased from \$3.3 annual average Budget.
- 2 Current Contractors on site: Asplundh Tree Company and Wright Tree Service.



What are we trying to accomplish?

- We are trying to clear a minimum of 10ft around Primary Distribution lines and up to 22ft around Transmission lines.
- Removing all tall growing species of trees within the ROW on all 69kV and 161kV transmission lines.
- Reduce vegetation related outages by 50% each year.(1217 in 2016 and 97 in 2020)
- Provide “Excellent Customer Service” by contacting customers within 24 hours of their requests.
- Educating our Customers on what we are trying to accomplish.

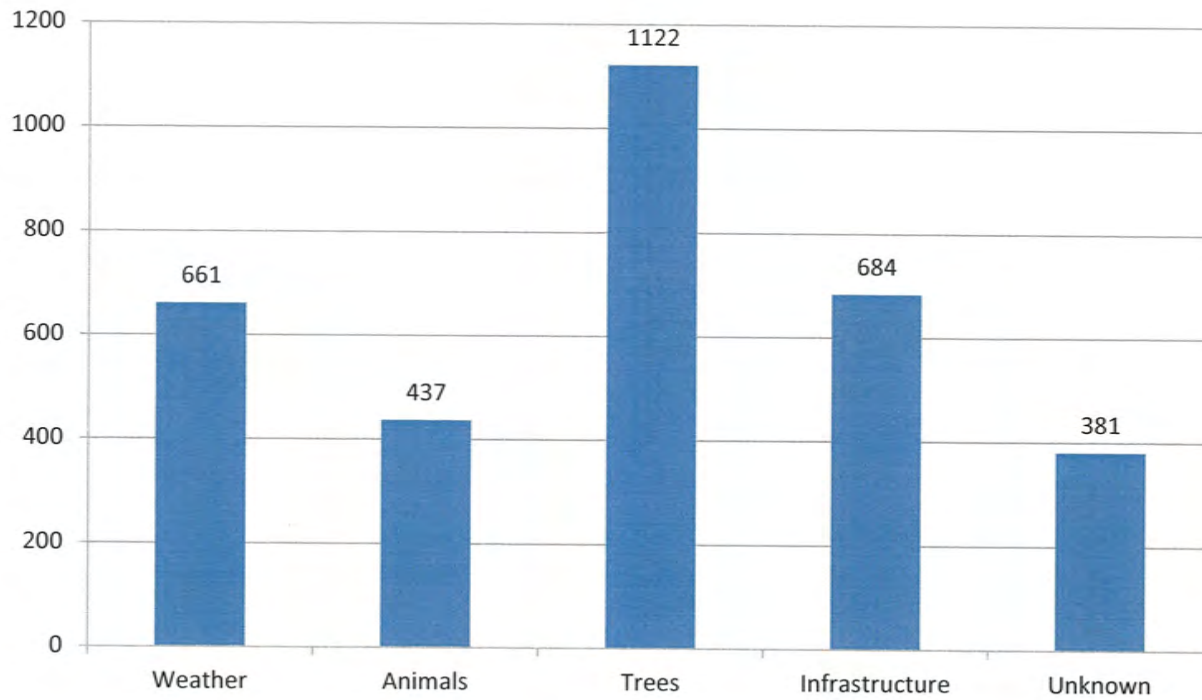
Tree Species and Growth Rates

- Ash - 18” per year with 36” Sucker Growth per year
- Cherry - 14”/year with 24”/year
- American Elm - 26”/year with 60”/year
- Hackberry - 18”/year with 30”/year
- Locust - 18”/year with 80”/year
- Silver Maple - 18”/year with 65”/year
- Pin Oak - 24”/year with 36”/year
- White Oak - 9”/year with 19”/year
- Poplar - 52”/year with 80”/year
- Black Walnut - 40”/year with 70”/year

Local Environment

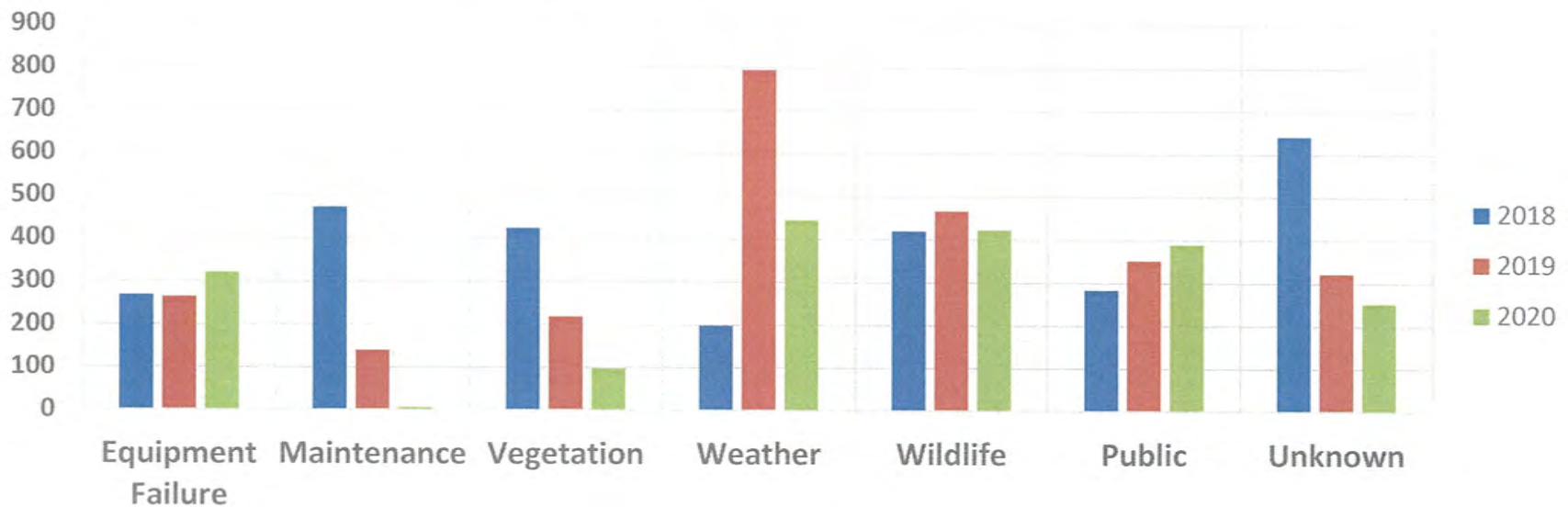
- Inches of rain per year = 10 year average 34” per year
- Growth rates of trees in this area, growing seasons
- Number of species of trees within this area - dominant types = oaks, maples, hackberry, mulberry, hickory, catalpa, pines, firs, cypress,
- Disturbance growth rates, trimming disturbance, removals

Leading Causes for Outages (2017)



Leading Causes for Outages 2018 - 2020

Outage Trends By Cause



- **VM Power Line Clearances**
 - 15kV Distribution - 10 feet
 - 69kV Transmission - 20 feet
 - 161kV Transmission - 22 feet
- **Customer Responsibilities Beyond These Clearances**

Storm Damage



Storm Damage



Storm Damage



Storm Damage



Clearance Before Removal



Clearance After Removal



Clearance Before Trim



Clearance After Trim



Clearance Before Trim



Clearance After Trim



Clearance Before Removal



Clearance After Removal



Clearance Before Removal



Clearance After Removal



Questions?

Thank You!





Nearman Creek Power Station Surface Impoundment Closure Board Workshop

Environmental Services Department
April 7, 2021

Regulatory Considerations re Surface Impoundment Closure

- (1) Effluent Guidelines - bottom ash transport water
- (2) Coal Combustion Residuals Rule - design criteria
- (3) Clean Water Act - hydrologic conductivity





Regulatory Considerations: Effluent Limitations Guidelines (ELGs)

- National standards for wastewater discharges to surface waters of the U.S. (and publicly owned treatment works) – via NPDES permits
- April 2013 – Published in Federal Register
- November 2015 – Final Rule Published in Federal Register
- September 13, 2017 – EPA issued rule postponement of two ELG timelines for compliance dates for the best technology available (BAT) effluent limitations and pretreatment standards (PSES) for a 2 year period (October 2018 to October 2020)
 - Bottom ash transport water
 - Flue gas desulfurization (FGD) wastewater
- April 12, 2017 Ruling by US Court of Appeals, 5th Circuit, vacates and remands to EPA BAT for coal plants leachate and legacy wastewaters
- EPA's 2020 final rule established limits for FGD and bottom ash transport water (new ELG to reduce ~1 million lbs/year more pollution than 2015 rule – mercury, arsenic, selenium and nitrite/nitrates)
- Bottom ash transport water now requires high recycle rate systems and site specific discharges not to exceed 10% of bottom ash transport water system volume





Regulatory Considerations: Clean Water Act (CWA) Groundwater Liability

- (1) In 2018, EPA issued a Request for Comment regarding the CWA Coverage of “Discharge of Pollutants” via a Direct Hydrologic Connection to Surface Water and whether pollutant discharges from point sources that reach jurisdictional surface waters via groundwater**
- (2) On April 15, 2019, EPA issues an Interpretative Statement on the Application of the NPDES Program to Releases of Pollutants from Point Sources to Groundwater. EPA concluded that releases of pollutants to groundwater are “categorically” excluded from the Act’s permitting requirements...discharges to groundwater are regulated by States and EPA under different statutory authority**
- (3) On April 23, 2020 the Supreme Court ruled on the Maui vs Hawaii Wildlife Fund case requiring permits when a pollutant originates from a non-point source that can be traced to reach navigable waters through groundwater**
- (4) On January 14, 2021, EPA issued guidance clarifying the Supreme Court Decision of Maui vs Hawaii Wildlife Fund – discharges of pollutants from a point source that reach a water of the U.S., after traveling through groundwater, if that discharge is the “functional equivalent of a direct discharge from a point source into navigable waters of the U.S.**



Regulatory Considerations: Coal Combustion Residuals Rule

- ❖ Published in the Federal Register April 17, 2015
- ❖ Rule became effective on October 17, 2015
- ❖ Modifications/revisions to the Rule since 2016 and beyond
- ❖ Landmark ruling in August, 2018 by D.C. Circuit Court: Utility Solid Waste Activities Group (USWAG) v. EPA. Requires closure or retrofitting of all unlined OR clay lined surface impoundments:
 - ❖ Vacated relevant provisions that allows for continued operation of unlined surface impoundments
 - ❖ Court found EPA acted arbitrarily and capriciously in concluding existing clay-lined impoundments should count as “lined”
 - ❖ Legacy impoundments no longer exempt
- ❖ In March, 2019, a Federal Appeals court granted EPA remand without vacatur, its 2018 revisions to the Obama-era Rule, which ensures that compliance deadline extensions and other provisions that were part of the changes will stay in place until the agency finishes a new “expedited” process to amend the rule
- ❖ Many other regulatory changes have occurred and continue to occur with the CCR Rule that I will discuss at later date
- ❖ BPU’s decision to convert to a dry bottom ash system and close the Nearman Power Station’s surface impoundment was a good decision



Coal Combustion Residuals Rule

➤ 40 CFR 257.70 Design Criteria

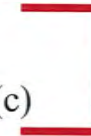
(a)

(1) No later than October 17, 2016, the owner or operator of an existing CCR surface impoundment must document whether or not such unit was constructed with any one of the following:

(i) [Reserved]

(ii) A composite liner that meets the requirements of § 257.70(b); or

(iii) An alternative composite liner that meets the requirements of § 257.70(c)



2 feet of compacted soil
with hydraulic
conductivity of 1×10^{-7}





Initial Steps Prior to Initiating Closure

- Low volume water discharge via NPDES permit
- Groundwater monitoring system and/or additional wells & initiate detection/assessment monitoring for data evaluation
- Location restrictions/Design Criteria/Structural Integrity/Air Criteria
- Annual Groundwater Monitoring & Corrective Action
- Hydrologic and Hydraulic Capacity Assessments
- Statistical evaluation of groundwater monitoring
- Establish groundwater protection standards
- Closure and Post-closure Care
- Alternate Source Demonstration
- KDHE approval of Construction Quality Assurance Plan for closure/UG Floodplain Permit
- Posting to BPU CCR website & Recordkeeping

Subsurface Investigation

Subsurface Investigation of Design Criteria for Liner

BPU Nearman CCR Project Subsurface Investigation Sketch 8/1/2016



Legend

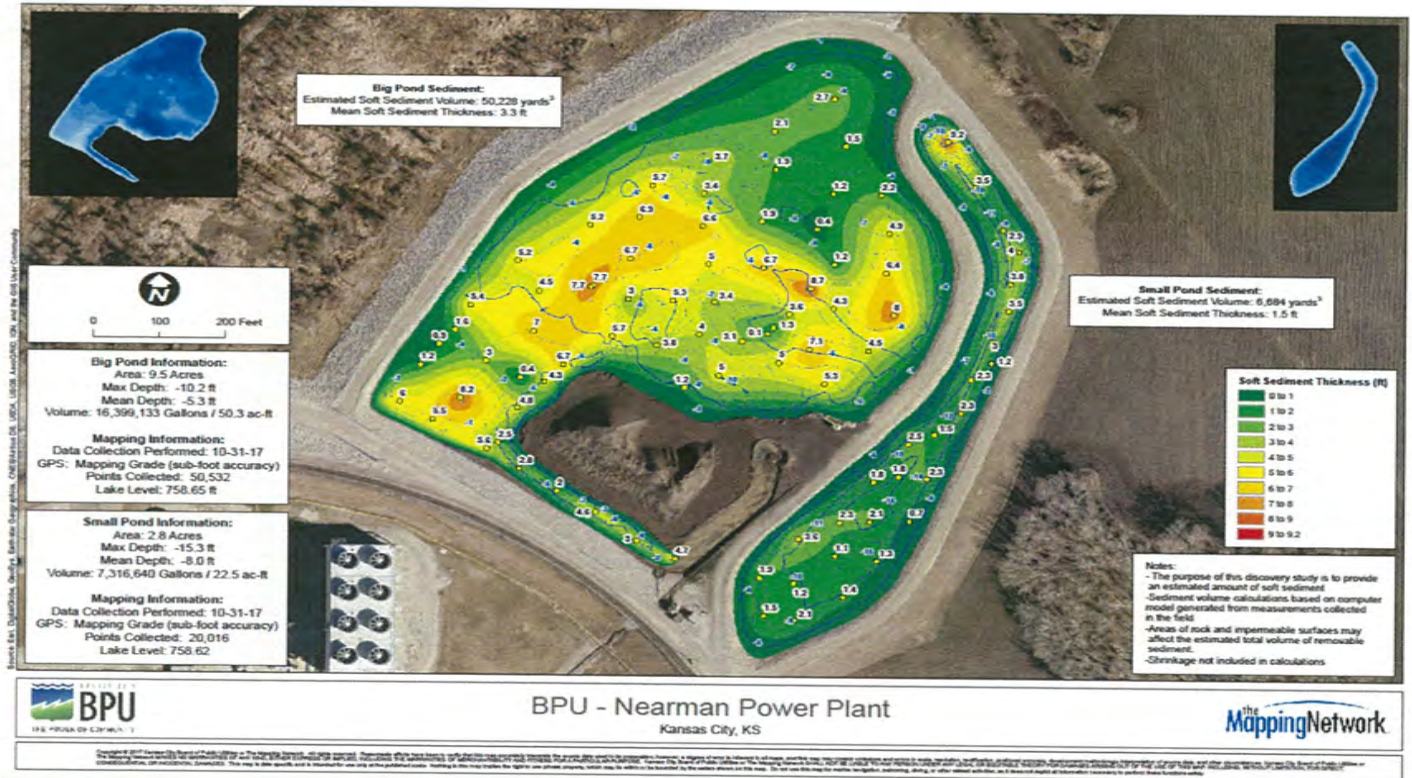
-  2016 Borings
-  Existing Locations
-  Monitoring Wells
-  GeoSource Borings
-  AECOM Soil Borings

Boring	Northing	Easting	Liner Elev.
B-10	322951	2216485	742
B-11	323624	2216671	742
B-12	323091	2216547	742
B-13	322271	2216019	742
B-14	323410	2216217	762
B-15	323041	2216089	742

All borings advanced 5 feet below liner elevation

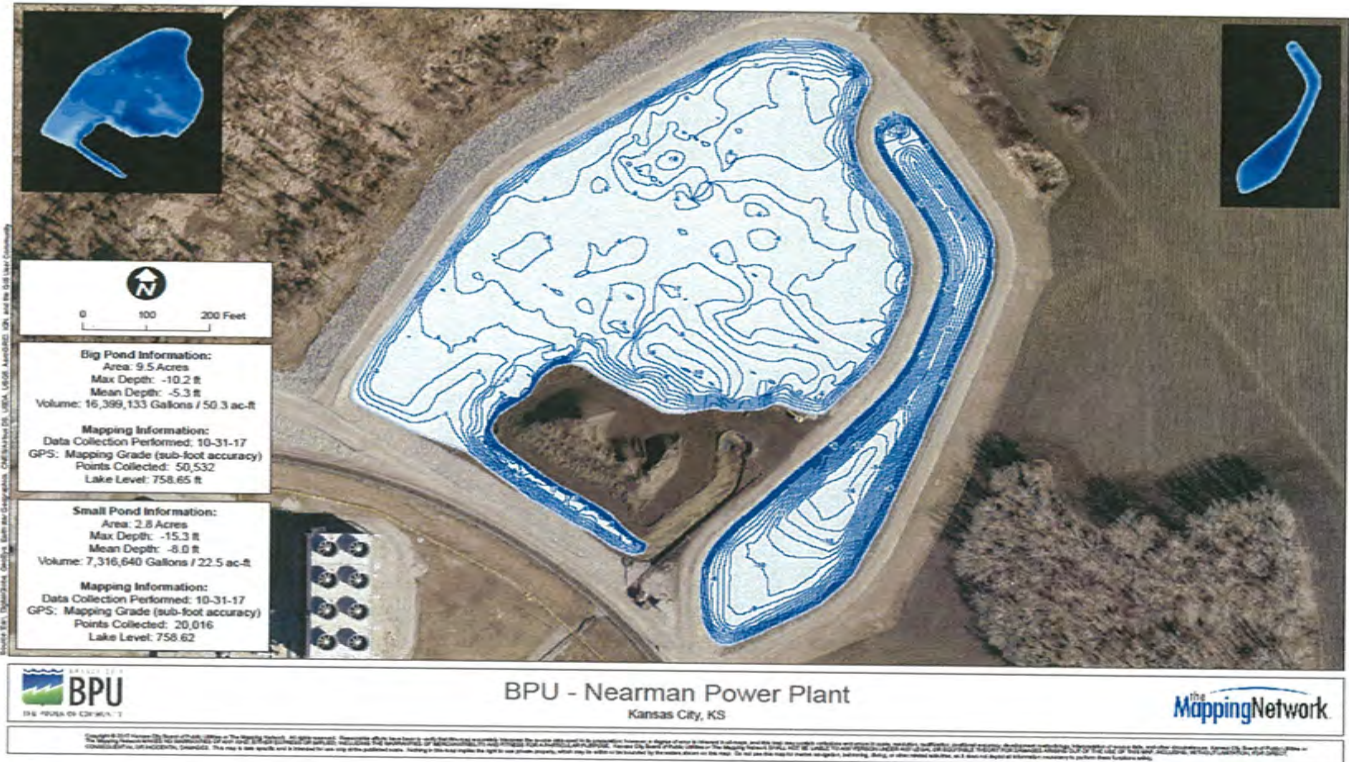
Bathymetric Survey

Bathymetric survey of existing bottom ash



Data Collection

Contour map



Demolition and Disposal of Piping



Step 1:
Removal of rip
rap from banks



Removal of Rip Rap





National Pollutant Discharge Elimination System (NPDES)- Low Water Volume Discharge

Step 2: permitted low water discharge

Use of CO2 to reduce pH



Low Water Volume Discharge

Additional filtering box for water discharge to aid in reducing suspended solids.
2 and 5 micron felt filters



Progress





Delays Due to Flooding Events in 2019





June 2019 Missouri River Flood Event





2019 Missouri River Flood Event



Removal of Bottom Ash for Beneficial Use

Step 3: removal of bottom ash and water management



Removal of Bottom Ash for Beneficial Use





Cold Weather Delays with Freezing Equipment



Looks like the Surface of Mars



Removal of Final Ash & Liner Material



Nuclear Gauge Testing for Final Compaction

Silty Material Allowable Placement Range

Minimum Density	106.6	pcf
Minimum Moisture	9.4	%
Maximum Moisture	19.4	%

Clayey Material Allowable Placement Range

Minimum Density	100.7	pcf
Minimum Moisture	12.3	%
Maximum Moisture	22.3	%





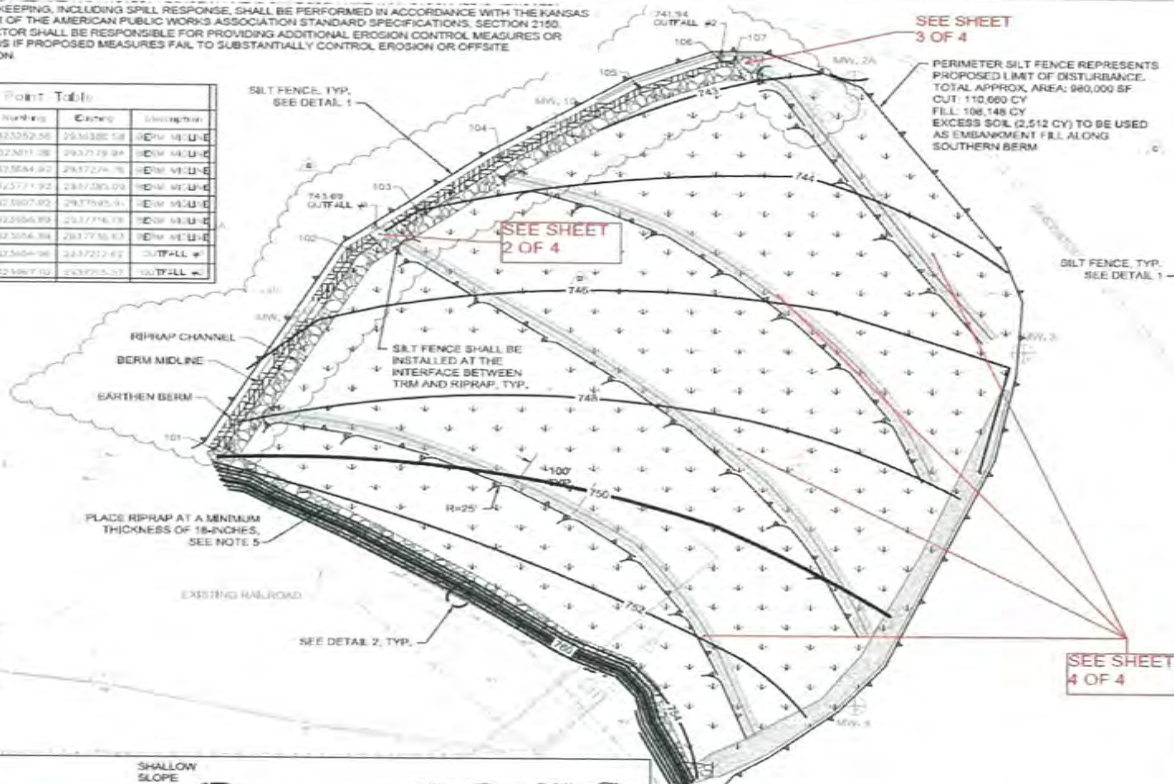
Final Grade & Cover of Former Surface Impoundment



Construction Quality Assurance Plan

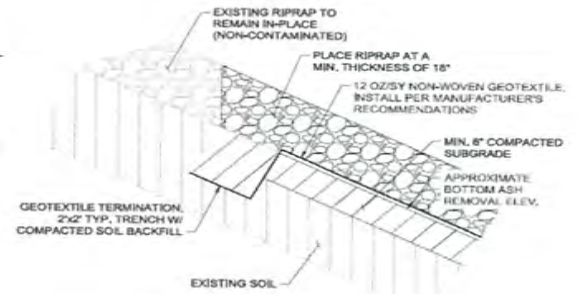
- GOOD HOUSEKEEPING, INCLUDING SPILL RESPONSE, SHALL BE PERFORMED IN ACCORDANCE WITH THE KANSAS CITY CHAPTER OF THE AMERICAN PUBLIC WORKS ASSOCIATION STANDARD SPECIFICATIONS, SECTION 2155.
- THE CONTRACTOR SHALL BE RESPONSIBLE FOR PROVIDING ADDITIONAL EROSION CONTROL MEASURES OR MODIFICATIONS IF PROPOSED MEASURES FAIL TO SUBSTANTIALLY CONTROL EROSION OR OFFSITE SEDIMENTATION.

Point Table				
POINT #	ELEVATION	NORTHING	EASTING	DESCRIPTION
101	8.00	323352.58	2933382.58	TOP OF 18" U-G
102	8.00	323811.28	2933729.94	TOP OF 18" U-G
103	18A.00	323844.82	2933729.94	TOP OF 18" U-G
104	15.00	323771.92	2933785.09	TOP OF 18" U-G
105	8.00	323807.82	2933795.51	TOP OF 18" U-G
106	8.00	322956.89	2933776.78	TOP OF 18" U-G
107	15.00	323056.84	2933776.78	TOP OF 18" U-G
900	74.500	423404.96	2837212.62	OUTFALL #
901	73.134	423404.96	2837212.62	OUTFALL #



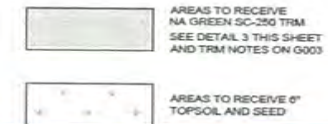
- SILT FENCE NOTES:**
- INSTALL SILT FENCE BEFORE COMMENCEMENT OF POND CLOSURE ACTIVITIES.
 - SILT FENCE SHALL BE INSTALLED IN ACCORDANCE TO UG STANDARD DETAIL 1400-E.
 - REPLACE TORN, OVERBURDENED, OR DECOMPOSING SILT FENCE WITHIN 24 HOURS.
 - TO JOIN SECTIONS OF SILT FENCE, POSITION POSTS TO OVERLAP. FABRIC SHOULD FOLD AROUND EACH TERMINAL POST ONE FULL TURN.

SILT FENCE DETAIL
NOT TO SCALE



- SILT FENCE NOTES:**
- GEOTEXTILE SHALL BE NON-WOVEN 12 OZ/SY AS MANUFACTURED GSE OR ENGINEER APPROVED EQUAL.
 - PANELS SHALL BE PLACED PARALLEL TO SLOPE.
 - PANELS SHALL BE JOINED BY STITCHING OR HAVE A MIN. 24" OVERLAP IF NOT JOINED.

RIPRAP DETAIL
NOT TO SCALE



KELL ENGINEERING COMPANY, INC.




CCR Groundwater Monitoring Well Network



Some land, water, ecology, and data (especially, GIS) are from DE, USEPA, USEGS, ArcGIS, USGS, and the GIS User Community

Next Steps

- Continue reporting requirements and postings to BPU website 
- After Pond Closure, CCR Rule requires two groundwater monitoring events for Appendix IV constituents, if below groundwater protection standards for two semi-annual consecutive events, then only semi-annual groundwater monitoring per KDHW landfill regulations
- Post-closure care until unit can be removed from permit





Ash Tonnage

Total Amount of Bottom Ash Removed

	Beneficial Use (Inland & Holland Mines)	Landfill (unsuitable material for mine stabilization)
Tonnage	211,838	67,694
\$/ton	\$17.11	\$27.92

Final Cost of Bottom Ash Pond Closure: \$8.0 M

Savings of ~ \$2.3M by utilizing beneficial use vs. landfill



Final Closure

Benefits of Closure by Removal:

- Lessens likelihood of legal challenges
 - Recent lawsuits:
 - Ameren in St. Charles County for violation of the CWA
 - Georgia Power CWA violations
- Considered Best Measure of Corrective Action
- No Post Closure Care requirements under 40 CFR 257.102(c) for facilities closing by removal. Always pending CCR regulatory changes and State adoption of Permit Program





Questions?



Approval of Minutes
Regular Session April 7, 2021
Agenda Item #V

REGULAR SESSION –WEDNESDAY, APRIL 7, 2021

STATE OF KANSAS)
) SS
CITY OF KANSAS CITY)

The Board of Public Utilities of Kansas City, Kansas (aka BPU, We, Us, Our) met remotely in Regular Session on Wednesday, April 7, 2021 at 6:00 P.M. The following Board Members were on the teleconference: Robert L. Milan, President; Mary Gonzales, Vice President; Rose Mulvany Henry, Secretary; Jeff Bryant, and Thomas Groneman, and Ryan Eidson.

Also on teleconference: William Johnson, General Manager; Angela Lawson, Deputy Chief Counsel; Lori Austin, Chief Financial Officer/Chief Administrative Officer; Steve Green, Executive Director Water Operations; Johnetta Hinson, Executive Director Customer Service; Jeremy Ash, Executive Director Electric Operations; Dong Quach, Executive Director Electric Production; Jerry Ohmes, Executive Director Electric Supply; Jerry Sullivan, Chief Information Officer; Robert Kamp, IT Project Manager; Dennis Dumovich, Director of Human Resources; Andrew Ferris, Director Electric Supply Planning; and Patrice Townsend, Director Utility Services.

A tape of this meeting is on file at the Board of Public Utilities.

Mr. Milan called the Board Meeting to order at 6:00 P.M. He welcomed all that were listening or viewing the meeting. He stated the COVID-19 pandemic had resulted in a State of Emergency disaster declared by the Governor which made it necessary to conduct the meeting using technology instead of in person. Those wishing to offer comments during the Visitors Comments section could click on the raised hand feature at the bottom of the application or window or press Star 9 and be connected by phone. As always, the public could email or call the BPU with any concerns. The Agenda could be found on the BPU website. If they were using Zoom, it would appear on their screen. Mr. Milan introduced himself and the other Board Members along with the General Manager, and Legal Counsel.

Roll call was taken and all Board Members were present via teleconference.

Item #3 – Approval of Agenda

A motion was made to approve the Agenda by Mr. Groneman, seconded by Mr. Bryant, and unanimously carried.

REGULAR SESSION –WEDNESDAY, APRIL 7, 2021

STATE OF KANSAS)
) SS
CITY OF KANSAS CITY)

Item #5 – Approval of Regular Session Minutes

A motion was made to approve the minutes of the Regular Session of March 17, 2021 by Mr. Eidson, seconded by Mr. Bryant, and unanimously carried.

Item #6 – Public Comments

Mr. William Johnson, General Manager, asked Mr. Robert Kamp, IT Project Manager, if there were any visitors wishing to speak.

Mr. Kamp said that no one had their hand raised via teleconference.

Item #7 – General Manager / Staff Reports

- i. *COVID-19 Update:* Mr. Johnson gave an update on company COVID-19 matters. He also spoke about working with the State on the new Kansas Emergency Rental Assistance (KERA) program, part of the Kansas Housing and Resource Corporation. A portion of that program included utility assistance.

Mr. Johnson addressed comments from the Board.

- ii. *Preliminary February 2021 Financials:* Lori Austin, Chief Financial Officer/Chief Administrative Officer, presented the preliminary February 2021 Financials with a PowerPoint presentation (see attached).
- iii. *APPA RP3 Award:* Dennis Dumovich, Director of Human Resources, informed the Board of BPU’s platinum designation for the Reliable Power Provider (RP3) award. It was awarded every three years and recognized public power utilities that demonstrated proficiencies for the following; reliability, safety, workforce development, and system improvement.
- iv. *KMEA Board Appointment:* Mr. Johnson asked for Board approval for Mr. Dong Quach, Executive Director Electric Production, to serve on the Kansas Municipal Energy Agency (KMEA) Board of Directors.

REGULAR SESSION –WEDNESDAY, APRIL 7, 2021

STATE OF KANSAS)
) SS
CITY OF KANSAS CITY)

A motion was made to approve the appointment of Mr. Dong Quach to the KMEA Board of Directors by Ms. Gonzales, seconded by Mr. Bryant and unanimously carried.

- v. *Miscellaneous Comments:* Mr. Johnson informed the Board that the KDHE Loan had been taken before the UG Standing Committee. It had been passed onto the full Commission for consideration.

Mr. Bryant, a member of the UG Standing Committee, felt that everyone understood that the utility was doing its best to be a good steward of the money in the community and that maintaining aging infrastructure was a daunting task.

Mr. Johnson also wished Mr. Eidson a Happy Birthday.

Item #8 – Board Comments

Mr. Eidson had no comments.

Mr. Groneman had no comments.

Mr. Bryant thanked all for the evening’s updates and their continued efforts.

Ms. Gonzales had no comments.

Ms. Mulvany Henry echoed Mr. Bryant’s thanks. She also thanked Mr. Johnson for the approach being taken regarding the rent and utility assistance program.

Mr. Milan wanted the Board to begin considering meeting in person. He also spoke about Board policy and what the Board’s responsibilities were; to help assist policy and also approve the budget. He included that the Communication office was the spokesperson for the Board members. With the ongoing pandemic situation and also upcoming elections, they had to make sure that responses to the public were cleared through the General Manager and Communication Office.

REGULAR SESSION –WEDNESDAY, APRIL 7, 2021

STATE OF KANSAS)
) SS
CITY OF KANSAS CITY)

Item #9 – Adjourn

A motion was made to adjourn the meeting at 6:37 P.M. by Ms. Gonzales, seconded by Mr. Eidson.

ATTEST:

APPROVED:

Secretary

President

February 2021 Preliminary Financial Results

April 7, 2021

2021 Billed kWh (YTD Jan – Feb)

Electric	(CY) 2021 YTD	(PY) 2020 YTD	
Residential	107,609,680	98,333,935	
Commercial	150,372,024	151,998,743	
Industrial	72,797,272	91,919,002	
	330,778,976	342,251,680	-3.4%

Lower usage in 2021 compared to 2020 due to both weather and COVID-19 shutdown or slowdown of businesses.

Residential – Up 9% Commercial – Down 1% Industrial – Down 21%

2021 Billed CCF's (YTD Jan – Feb)

Water	(CY) 2021 YTD	(PY) 2020 YTD	
Residential	554,052	538,153	
Commercial	355,079	376,529	
Industrial	274,264	319,647	
	1,183,395	1,234,329	-4.1%

Slightly lower usage compared to 2020 due to business shutdowns as a result of COVID-19

Residential – Up 3% Commercial – Down 5% Industrial - Down 14%



Financial Results

Revenues – February 2021

	(CY) 2021 February	(PY) 2020 February		Budget 2021 February	(CY) 2021 February	
Electric	\$ 41.071	\$ 23.930		\$ 21.417	\$ 41.071	
Water	4.021	4.123		4.118	4.021	
Combined	\$ 45.092	\$ 28.053	60.7%	\$ 25.535	\$ 45.092	76.6%

**Dollars in millions

Actual Compared to 2021 Budget

Electric up 92%

Water down 2%

**Wholesale sales were up \$18.5 million. Recognized the revenue earned from SPP related to the extreme cold period. The cash was not received until March 2021.

Recognized ERC Over Collection for 3rd/4th Quarter of 2020 of \$11.7 million (\$1.9 million). This is being recognized as revenue and amortized over the next 6 months (Jan-Jun 2021)

Revenues – 2021 YTD

	(CY) 2021 YTD	(PY) 2020 YTD		Budget 2021 YTD	(CY) 2021 YTD	
Electric	\$ 63.047	\$ 47.824		\$ 42.859	\$ 63.047	
Water	7.611	8.337		8.342	7.611	
Combined	\$ 70.658	\$ 56.161	25.8%	\$ 51.201	\$ 70.658	38.0%

**Dollars in millions

Variance – YTD comparing Budget to Actual for 2021

Electric: *Up 77%*

Residential \$427K

Commercial (\$313K)

Industrial (\$1.0M)

Schools \$180K

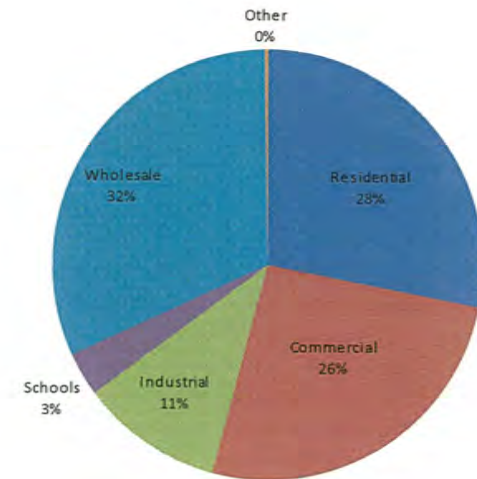
Wholesale \$18.6M

Water: *Down 8%*

Residential (\$143K)

Commercial (\$243K)

Industrial (\$158K)



Recognized \$3.8M deferral of revenue YTD from the 2020 ERC in 2021

Operating Expenses – February 2021

	(CY) 2021 February	(PY) 2020 February		Budget 2021 February	(CY) 2021 February	
Electric	\$ 25.697	\$ 14.839		\$ 16.290	\$ 25.697	
Water	2.838	2.647		3.168	2.838	
Combined	\$ 28.535	\$ 17.486	63.2%	\$ 19.458	\$ 28.535	46.6%

**Dollars in millions

Variance – Comparing Budget to Actual for 2021

Electric – up 57%

Production	- 12% down
Purchased Power	- 28% down
Fuel	- 507% up
T&D	- 20% down
G &A	- 30% down

Water – down 10%

Production	- 10% down
T&D	- 10% down
G &A	- 30% down

Fuel expense amount of \$14.02M for the month. Majority of expense related to extreme cold weather event.

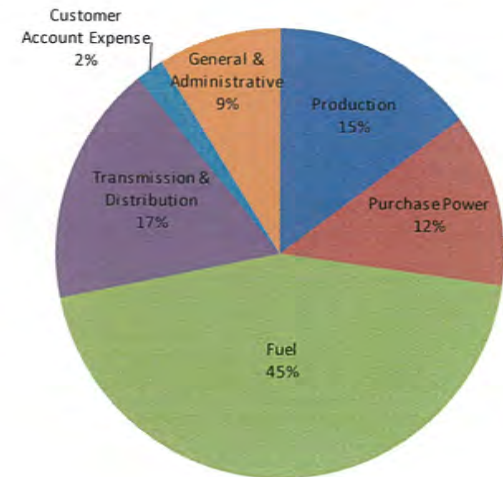
Operating Expenses – 2021 YTD (Total)

	(CY) 2021 YTD	(PY) 2020 YTD		Budget 2021 YTD	(CY) 2021 YTD	
Electric	\$ 39.677	\$ 30.694		\$ 33.445	\$ 39.677	
Water	5.514	5.920		6.426	5.514	
Combined	\$ 45.191	\$ 36.614	23.4%	\$ 39.871	\$ 45.191	13.3%

**Dollars in millions

Actual Compared to 2020 Budget

- Electric up 18%
- Water down 8%



Financial Results

Operating Expenses – 2021 YTD less Depreciation

	(CY) 2021 YTD	(PY) 2020 YTD		Budget 2021 YTD	(CY) 2021 YTD	
Electric	\$ 34.588	\$ 26.131		\$ 28.391	\$ 34.588	
Water	4.123	4.636		5.104	4.123	
Combined	\$ 38.711	\$ 30.767	25.8%	\$ 33.495	\$ 38.711	15.6%

**Dollars in millions

Variance – YTD comparing Budget to Actual 2021

Electric:

Purchased Power (\$2.5M)
 Fuel \$12.4M
 Production (\$1.0M)
 T&D (\$1.2M)
 G&A (\$1.2M)

Water:

Production (\$214K)
 T&D (\$300K)
 G&A (\$400K)

Change in Net Position – February 2021

	(CY) 2021 February	(PY) 2020 February		Budget 2021 February	(CY) 2021 February
Electric	\$ 11.434	\$ 4.659		\$ 1.270	\$ 11.434
Water	0.612	0.821		0.331	0.612
Combined	\$ 12.046	\$ 5.480	119.8%	\$ 1.601	\$ 12.046

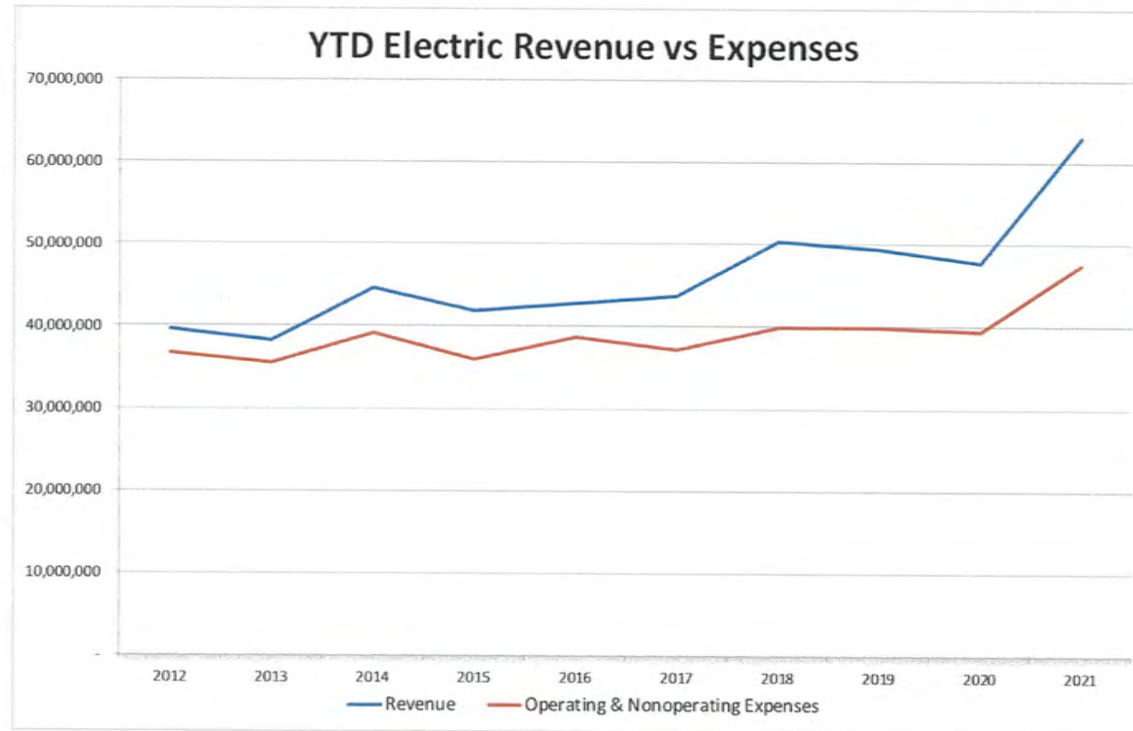
**Dollars in millions

Change in Net Position – 2021 YTD

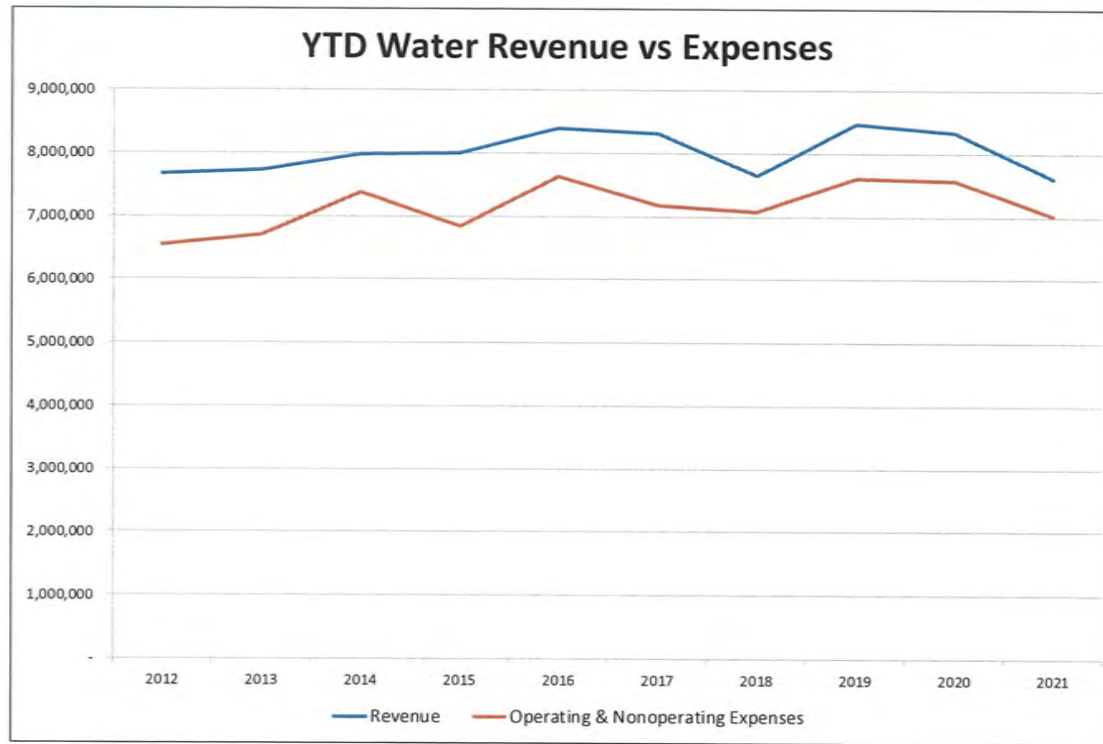
	(CY) 2021 YTD	(PY) 2020 YTD		Budget 2021 YTD	(CY) 2021 YTD
Electric	\$ 15.545	\$ 8.392		\$ 1.697	\$ 15.545
Water	0.587	0.778		0.669	0.587
Combined	\$ 16.132	\$ 9.170	75.9%	\$ 2.366	\$ 16.132

**Dollars in millions

Financial Results – 10 Year Trend



Financial Results – 10 Year Trend



Cash Position

	(CY) 2021 February	(PY) 2020 February	2021 January
Combined (E&W)	\$ 43.02	\$ 51.20	\$ 41.75
Days Cash-on-Hand	74	84	75

1 Day = Approximately \$550K-\$600K

**Dollars in millions

Balance Sheet: Notables

	(CY) 2021 February	(PY) 2020 February
Fuel Inventory	\$ 3.749	\$ 5.303
Bond Dollars 2016C (Elec T&D)	\$ 1.543	\$ 8.776
Bond Dollars 2020A (Elec)	\$ 8.200	\$ -

**Dollars in millions

Capital Spending

	(CY) 2021 YTD	(PY) 2020 YTD	2021 Budget	
Electric	\$ 0.13	\$ 2.43	\$ 38.94	
Water	0.53	0.94	12.34	
Common	0.34	0.32	5.91	
Total YTD Capital	\$ 0.99	\$ 3.69	\$ 57.20	Remaining 98%

**Dollars in millions

Major projects in 2020:

Underground Distribution - \$215K
 Nearman Cable Replacement - \$35K
 Water Leak, Valve, System Imp. - \$160K
 UG/CMIP Water Distribution - \$111K

*Did receive \$590K from FEMA claim in Spring 2019 Storm Activity
 (credit applied to projects).

Debt Coverage

Debt Coverage with PILOT

	(CY) 2021 February	(PY) 2020 February
Electric	2.13	1.98
Water	2.20	1.71
Combined	2.35	1.95

Debt Coverage w/o PILOT

	(CY) 2021 February	(PY) 2020 February
Electric	1.53	1.38
Water	1.74	1.27
Combined	1.73	1.38

Financial Guideline Target 1.6 to 2.1 times with PILOT

