

SEPTEMBER 2025

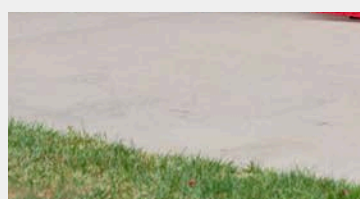
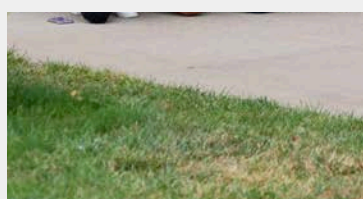
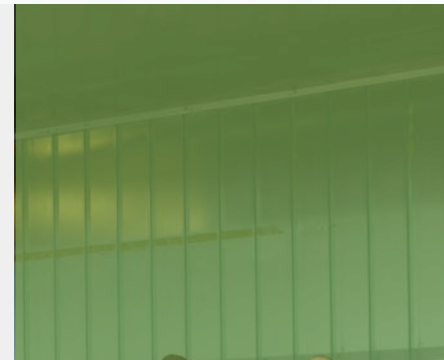
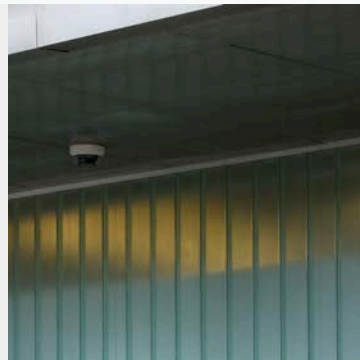


KANSAS CITY
BPU

THE POWER OF COMMUNITY

COMMUNITY IMPACT REPORT

Prepared for:
Board of Directors,
Kansas City Board of Public Utilities



This report summarizes the outcomes, investments, and services that directly benefit Wyandotte County residents.

General Manager's Report

At BPU, integrity isn't just a value; it's the standard we hold ourselves to in every decision and every action. This month has reminded us that our credibility is built not only on the systems we maintain, but on the way we serve our customers, stand by our employees, and work with our community

In September, we connected with neighbors in meaningful ways, from participating in the Dotteversity Parade alongside more than 2,500 residents, to presenting at the Area Agency on Aging alongside UG Environmental Services, to meeting directly with representatives from the Argentine and Westheight neighborhood groups. Our executive team also joined the Police Athletic League to serve dinner to more than 100 kids, reinforcing that we're more than a utility; we're neighbors who care.

We also leaned into leadership and learning. Our operations teams shared safety lessons with Memphis Light, Gas, and Water, and we hosted Argonne National Laboratory and Kansas Municipal Utilities here at BPU, bringing together 50 utility leaders from across the region. I'm proud that our own Darrin McNew delivered the keynote, spotlighting the expertise and leadership we have within our team..

As we move into the fall season, we remain focused on readiness, safety, and service. Our success will always be measured not just by what we deliver, but also by how we provide it - with respect, courtesy, and a commitment to the people of Wyandotte County.



Jeremy Ash

General Manager



Electric Systems & Operations



Darrin McNew

Executive Director | Electric Operations



Jerin Purtee

Interim Chief Operating Officer
Executive Director | Electric Supply



Don Stahl

Executive Director | Electric Generation



↑ *Electric and Water crews came together for a “lessons learned” safety presentation provided by the staff of Memphis Light, Gas, and Water.*

155
Days
accident-free
at Nearman
Energy Plant



Quindaro
technology
upgrades are
underway to
keep
systems
efficient



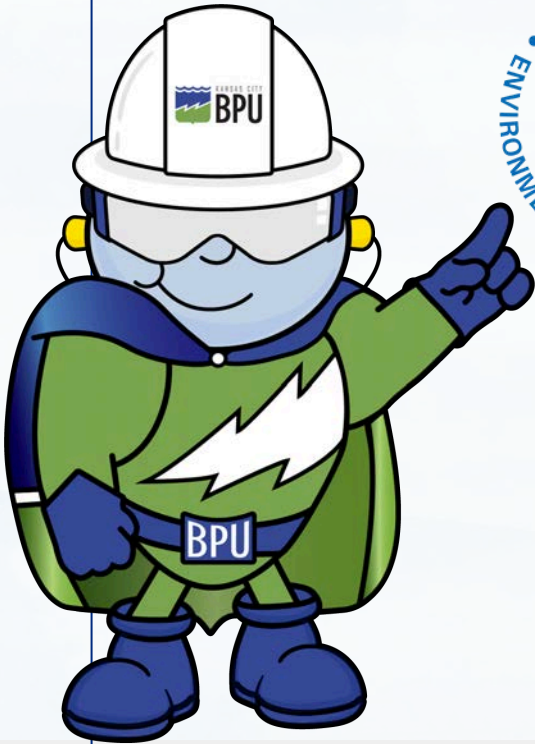
Safe and reliable electric production operations: Generation ran reliably throughout the quarter, with no forced outages, and supported daily system reliability during periods of high demand.

Water Systems & Operations



Steve Green

Executive Director | Water Operations



Safety and Preparedness

The Water Operation team submitted their 5-year Water Emergency Response Plan to the Environmental Protection Agency (EPA), ensuring readiness for outages, contamination, and other events and emergencies.

1,900

work orders
completed
year-to-date



100%

fire hydrant
inspections
completed.

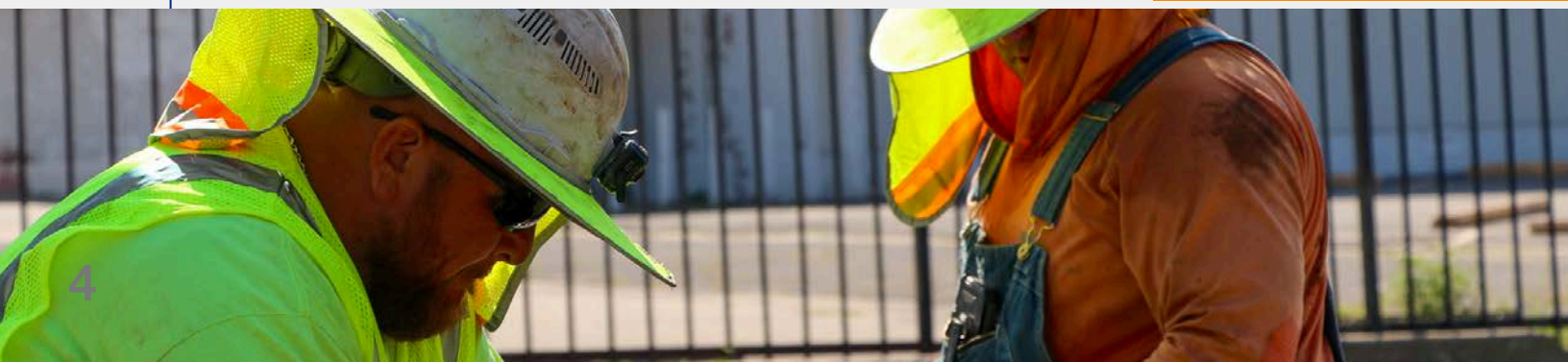


400 repairs
86 replacements

100%



completion of **3.4 miles** of water main replacement for Rosedale (Area R)



Community Engagement



3,600+ 

Students were positively impacted by BPU across four career fairs, collecting over 100 resumes and distributing nearly 300 flyers for open job positions.

\$262K - \$450K

in annual economic impact contributed to the local economy with the relocation of five BPU employees to Wyandotte County in 2025.

It's So Wyandotte



Regional Weather Resilience Workshop ↑
hosted by BPU and Kansas Municipal Utilities

50+ 
BPU employee volunteer hours captured in September.



Organizational WINS



In Your Words

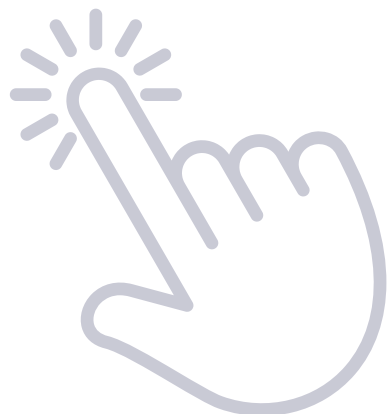
“We called BPU due to a concern about flickering lights...we have been subject to a house fire years ago and are still sensitive. Greg from BPU came to evaluate the situation. He was complete and informative about his findings and possible next steps for us. He effectively trimmed trees that we had attempted to, but were uncomfortable getting too close to the power lines. We found Greg to be very well informed, courteous, professional, and helpful in our time of need. We wanted to provide his team with the knowledge that he represents the company well.” -Joahn B.



BPU Leaders Team Up to Give Back

BPU's Executive Team joined the Police Athletic League (PAL) to serve dinner to more than 100 local kids, reinforcing our commitment to youth programs and building stronger connections with our community partners.

Stay in Touch



KANSAS CITY
BPU

THE POWER OF COMMUNITY

540 Minnesota Avenue
Kansas City, Kansas 66101

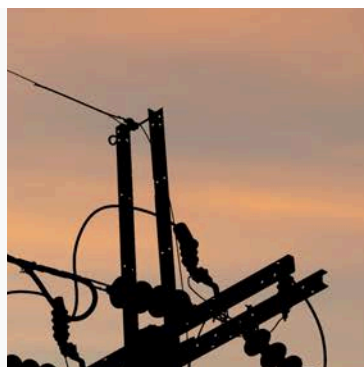
Phone: (913) 573-9000
Web: www.bpu.com

Customer Care
(913) 573-9190
✉ custservice@bpu.com

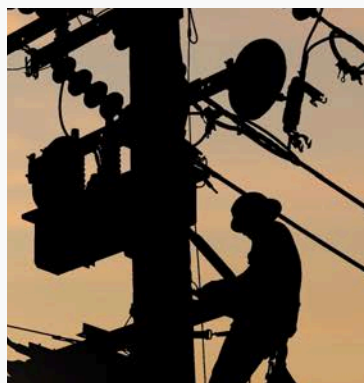
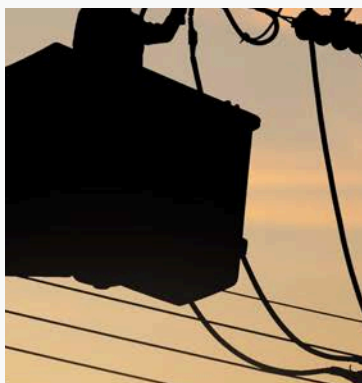
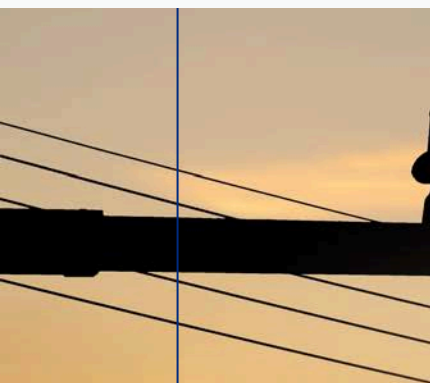
Payment Plans
(913) 573-9145

ELECTRIC OUTAGE ⚡
(913) 573-9522

WATER OUTAGE 💧
(913) 573-9622



NEW!
Schedule a speaker
at your next
community function
by emailing us:
publicaffairs@bpu.com



Community Giving:
publicaffairs@bpu.com



Contact your BPU Board Member
(913) 573-9025



BoardMembers@bpu.com

BPU In-Person Lobby Appointments
(913) 573-9960



Skip the long lines