

EMERGENCY TREE TRIMMING PROCEDURES



THE POWER OF COMMUNITY

Visit bpu.com
for more info

OWNER IS RESPONSIBLE

for maintaining all tree and plant growth on the property. BPU can safely lower power lines before you trim, just ask for our Line Drop Service at 913-573-9535.



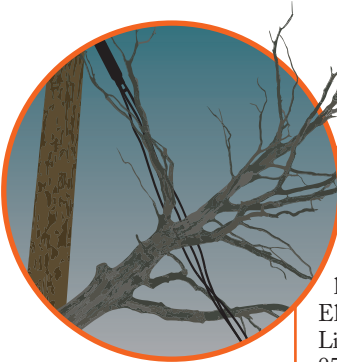
BPU SENDS AN ELECTRIC TROUBLEMAN

when tree-related issues are reported. The troubleman verifies if the issue is a safety concern and requires BPU to trim.



IF A TREE CAUSED AN OUTAGE

or is on a power line, call the Electric Outage Line at 913-573-9522. Trees and limbs must be safely cleared from power lines and poles before power can be restored.



OWNER IS RESPONSIBLE FOR TREE AND DEBRIS REMOVAL

when emergency tree trimming is complete.

For yard waste disposal options and drop-off sites call UG Waste Management at 913-573-5400.



BPU PROVIDES TREE TRIMMING

of plants and trees on the customer's property to address safety concerns and to restore service.



For electric issues/concerns:

Call: 913-573-9522

! ALWAYS CALL TO BE SURE it's safe to trim or
• remove trees around power lines.